

Standards: code of connection, early connection and governance

David Reid, Head of Policy and Insight

Gary Millar, PDP Policy

David Marjoribanks, PDP Policy



7 December 2022

We will record the session and publish on our website
Please put any questions in the 'questions' box

Agenda

1. Standards and consultation overview
2. Code of connection
3. Early connection
4. Governance of standards
5. Next steps

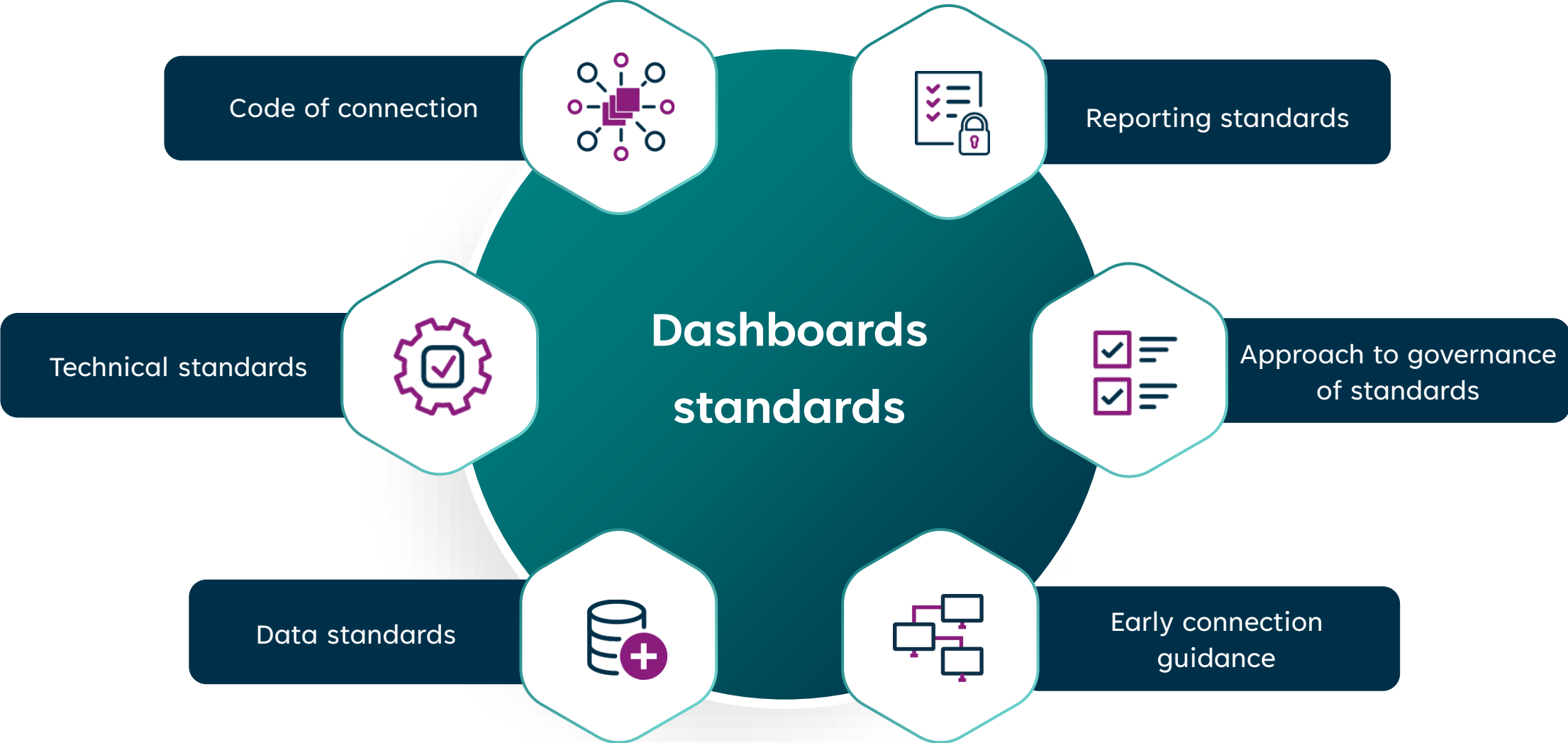


Pensions dashboards standards

The Pension Schemes Act 2021 and the pensions dashboards regulations give authority to the Pensions Dashboards Programme (PDP), as part of the Money and Pensions Service, to set standards.

- the standards will provide the rules and controls that will facilitate the ongoing connection to the pensions dashboards ecosystem
- they ensure the ecosystem functions effectively and efficiently, while putting consumers first
- standards ensure the security, stability and effective operation of dashboards

Dashboards standards

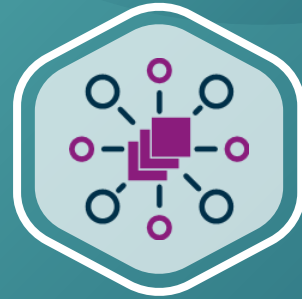


Standards consultation



- PDP consulted on the standards over the summer
- 56 responses to the consultation have been reviewed
- following the consultation, PDP has published the suite of standards which will be formally approved by the Secretary of State
- no major changes are expected prior to approval
- post-consultation changes listed in a change log on website

pensionsdashboardsprogramme.org.uk/standards/



Code of connection

Code of connection



The code of connection sets out how pensions providers and schemes, and dashboards providers are to connect to the dashboards ecosystem and what they need to do to remain connected.

The code of connection combines the required security, service and operational standards. It provides a standard of expected behaviour to protect all ecosystem participants and ensure an effective service.

Code of connection: what's in it?



Security standards – ongoing technical and procedural requirements to ensure ecosystem security

Service standards – minimum service levels and required procedures to deliver an effective service

Operational standards – minimum operational processes to support effective operation of the ecosystem

Code of connection: consultation feedback



- requirements were sensible and reasonable for a digital service
- view on response times:
 - <2 seconds wouldn't allow for real-time values
 - <10 seconds would be reasonable)
- service availability requirement - clarifying that as a digital service, data providers must be available 99.5% 24/7
- we've made a few changes to add clarifications requested by respondents

What are the headline requirements?

Response times

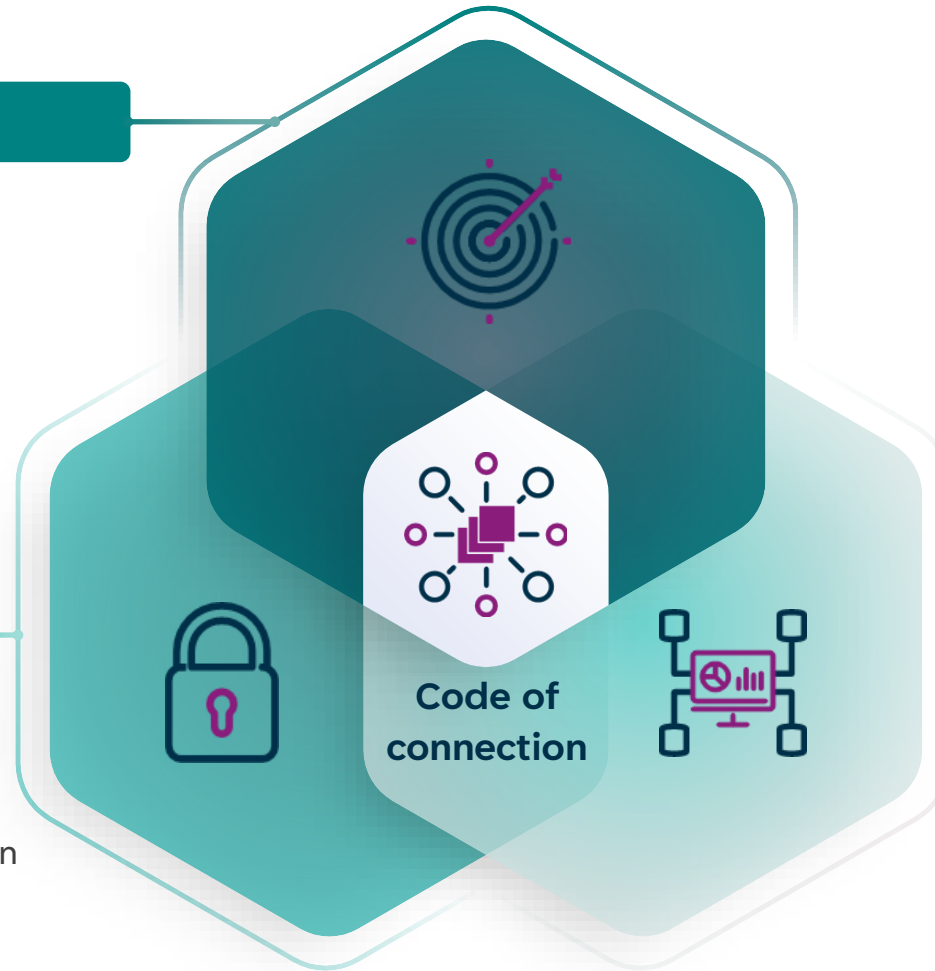
- ACK – <2 seconds
- Pel registration - <60 seconds
- view data – <10 seconds

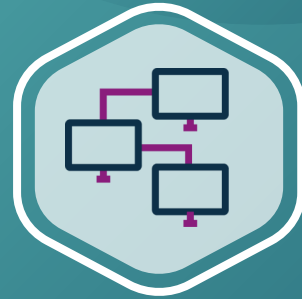
Security

- TLSv1.2 min, 1.3 if possible
- mTLS
- IT Health Check prior to connection
- annual IT Health Check

Service availability and outages

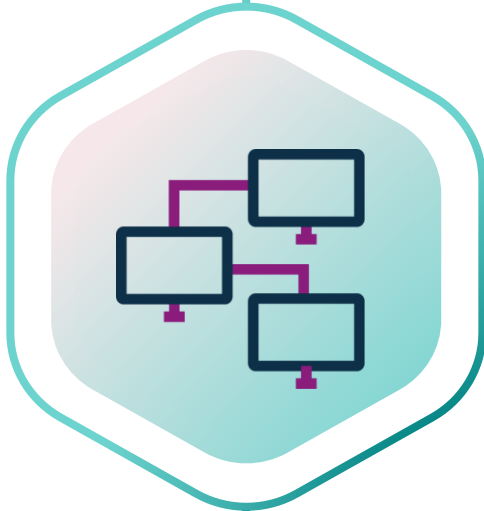
- 99.5% availability, 24/7
- 5 days advance notice of planned outages





Early connection

Early connection



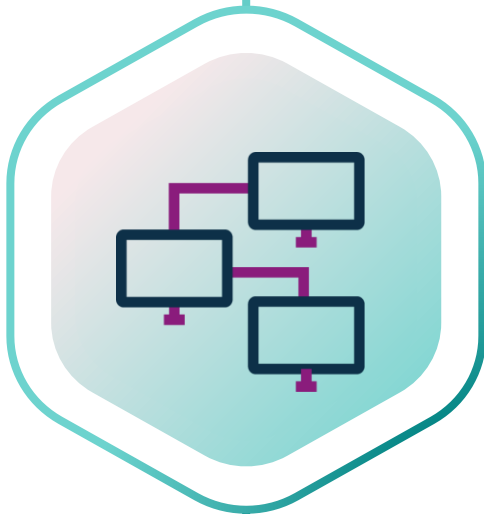
The early connection guidance is statutory guidance. It applies to the trustees of occupational pension schemes (schemes) who are looking to connect their scheme to the dashboards ecosystem before they are obligated to do so.

These trustees should be thinking about their connection date (and early application) many months before their connection deadline or when they want to connect (if earlier).

See TPR's guidance for schemes on getting ready to connect:

<https://www.thepensionsregulator.gov.uk/en/trustees/contributions-data-and-transfers/dashboards-guidance/connecting-to-pensions-dashboards>

Early connection: what's in it?



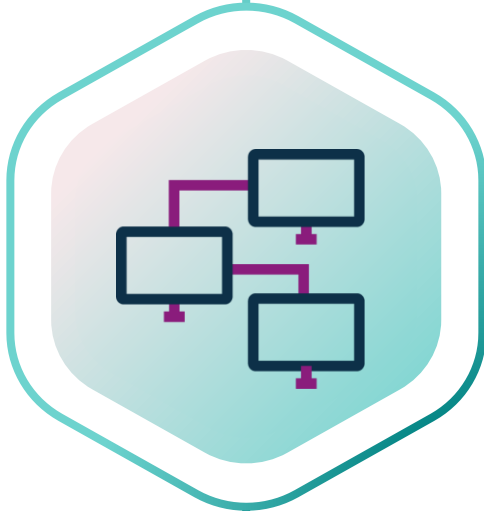
What is it?

- legislation will require application to MaPS for early connection
- we want to encourage early connection: more efficient, enables multiple schemes to be connected in bulk

Who it applies to

- applies only to occupational pension scheme trustees/managers choosing to connect early, before allotted connection window
- personal pension schemes: FCA rules

Early connection: consultation feedback



- respondents were supportive of our overall approach
- our proposed commitments for how we govern standards and manage change
- proposed approach to dealing with applications for early connection
- as such, there have been presentational changes and clarifications only



Governance of standards

Governance of standards



How changes may be requested

- requests to change may come from a variety of sources – participants, regulators, PDP user testing
- all requests must come through our governance process, where they will be evaluated for impact and benefit
- as our part of governance process, we will consider who to engage with eg TPR, FCA, DWP, industry stakeholders and the participant community

Decision makers

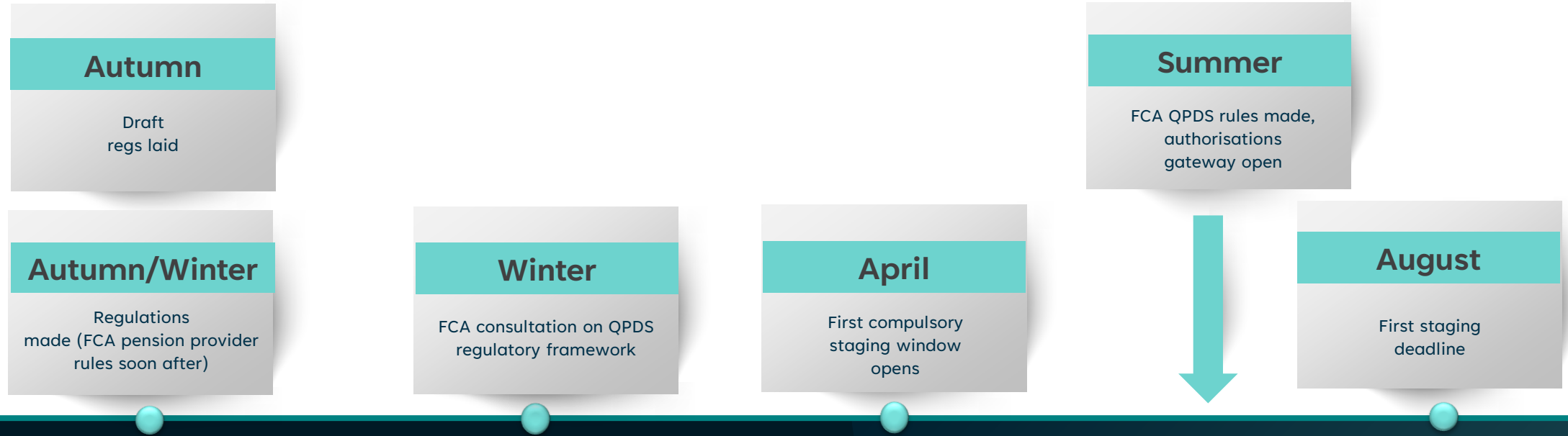
- Secretary of State (major changes)
- PDP (minor technical changes)

Governance: consultation feedback



- respondents were supportive of our overall approach
- our proposed commitments for how we govern standards and manage change
- proposed approach to dealing with applications for early connection
- as such, there have been presentational changes and clarifications only

Standards timeline

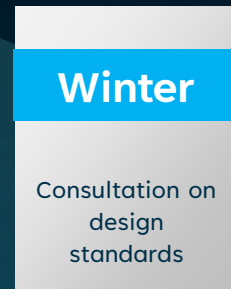


November 2022

December 2022/Jan 2023

April 2023

August 2023





Q&A



**Pensions
Dashboards**
Programme

Next steps

Sign up to webinars

pensionsdashboardsprogramme.org.uk/events-and-meetings/

8 December – design standards consultation

Read the updated standards

pensionsdashboardsprogramme.org.uk/standards/

Engage with PDP

Website videos, newsletter, blog and industry events

Respond to the design standards consultation

pensionsdashboardsprogramme.org.uk/standards/design-standards-consultation

Stay in touch



@pensions-dashboards-programme



@PensionsDboards

Money and Pensions Service,
120 Holborn, London EC1N 2TD

infopdp@maps.org.uk

pensionsdashboardsprogramme.org.uk



**Pensions
Dashboards**
Programme